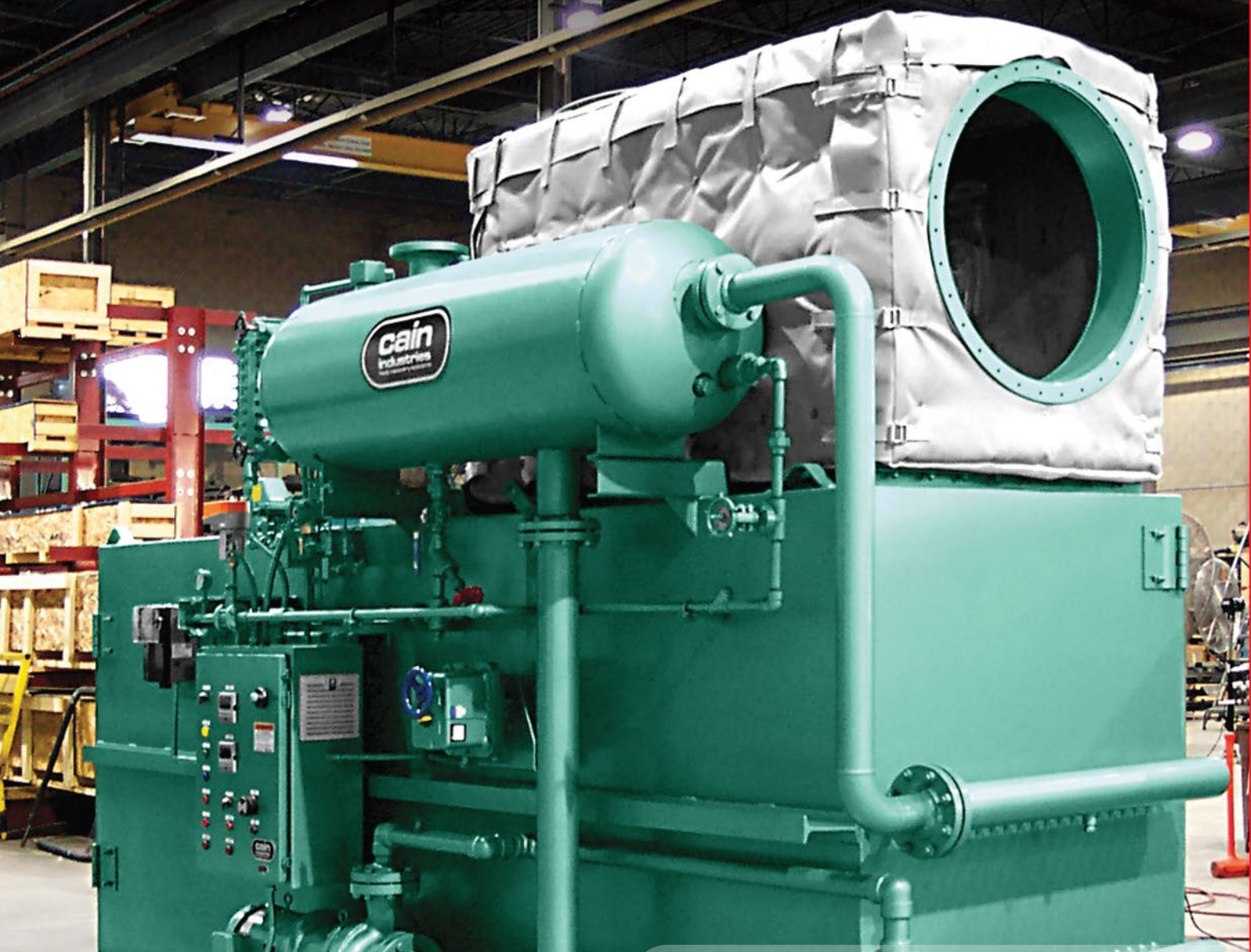


# ESG1 EXHAUST STEAM GENERATOR



UTILITY COMPANY APPLICATION – Page 1 of 2



## SAVINGS COMPARISON ANALYSIS

Customer Name: **Markham District Energy, Inc.** Customer Code: Reference: Utility Company: 56350

DATA without a Cain System	PERFORMANCE with a Cain System
----------------------------	--------------------------------

MWM TCG2032V16 Engine		ESG1-642F16CSS	
Heat Sink	Steam	Operating Steam Pressure	120 PSIG
Waste Exhaust Temp	840°F	Final Exhaust Temp	470°F
Water Temp. Inlet	N/A	Boiler Horsepower	146 BHP
SCFM	10,692	Equivalent Evaporation	5,041 pph
Fuel Type	Natural Gas	Pressure Drop, Exhaust	1.33" WC
O2 Content	N/A	BTU/hr Recovered	4,891,000
Excess Air	N/A	BTU/hr Saved	6,113,936
Combustion Efficiency	80% (relative)	Total Cost	\$161,925
Fuel Cost Per Therm	\$.80		
Annual Operating Hours	6,000		

**Payback: 6.6 mo.**  
**Annual ROI: 181%**  
**Annual Savings: \$293,469**

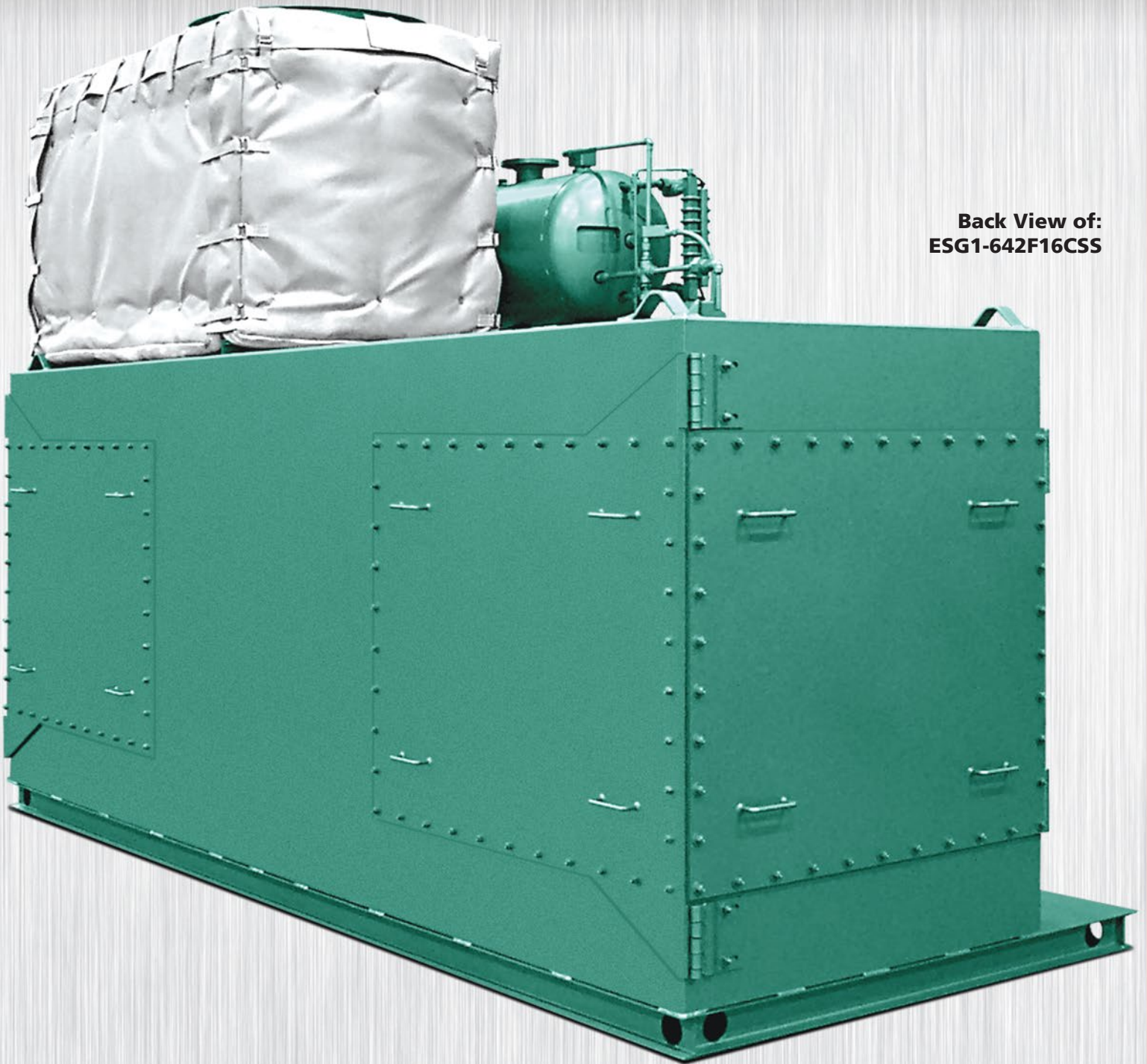
**Life Expectancy Savings: \$5,135,708** (15-20 years)

Savings comparison data is based on a conservative fuel cost per therm and approximate operating hours. Contact Cain Industries for your FREE savings analysis proposal.

Cain Industries  
 W194 N11826 McCormick Drive  
 Germantown, WI 53022 USA  
 262.251.0051 • cainind.com

# ESG1 EXHAUST STEAM GENERATOR

UTILITY COMPANY APPLICATION – Page 2 of 2



Back View of:  
ESG1-642F16CSS

Cain Industries  
W194 N11826 McCormick Drive  
Germantown, WI 53022 USA  
262.251.0051 • cainind.com

©2017 Cain Industries. All rights reserved.